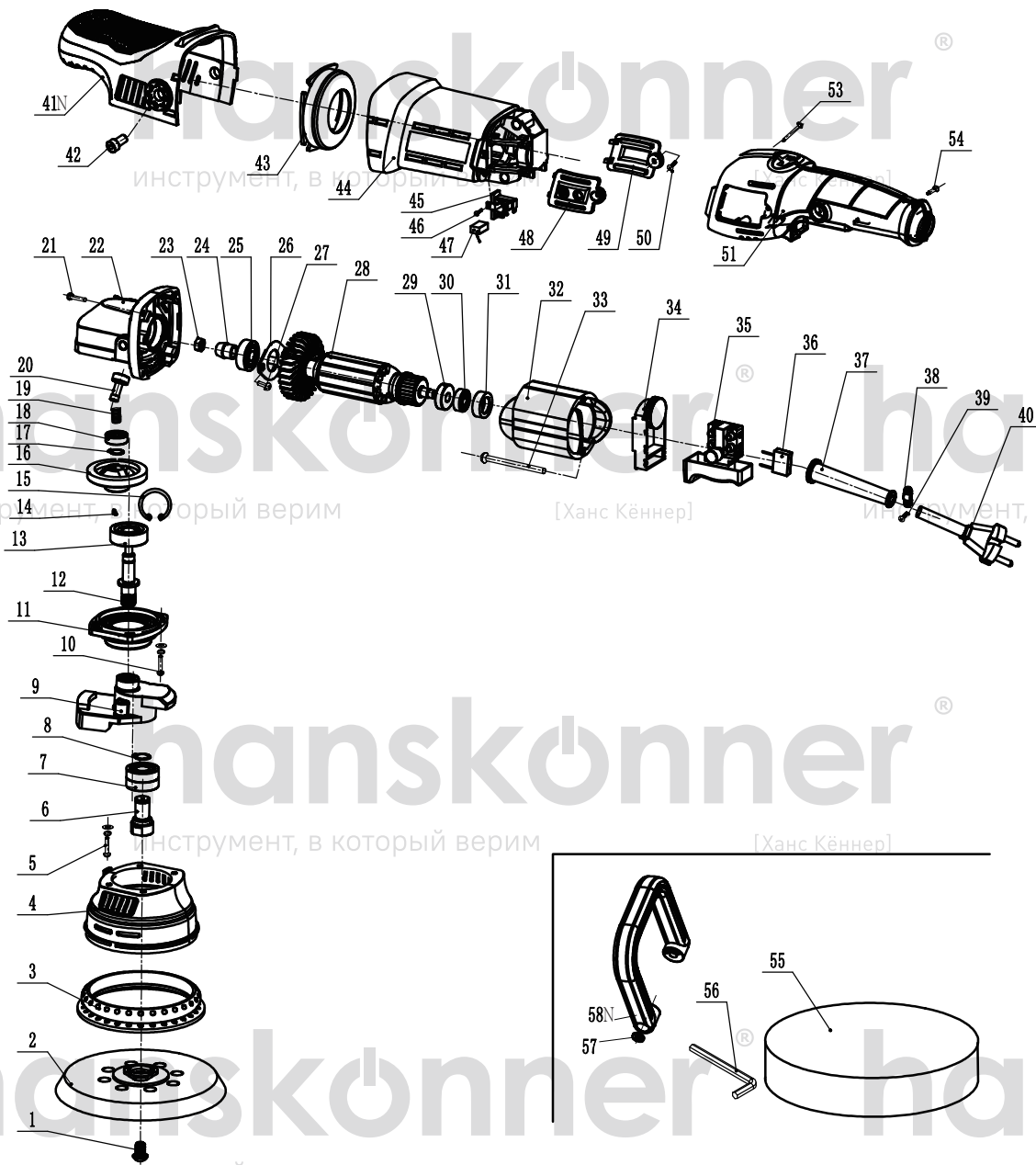


hanskonner®

HAG918CPE

инструмент, в который верим [Ханс Кённер]



NO.	DESCRIPTION	NO.	DESCRIPTION
1	SCREW M8X18	30	BEARING607
2	POLISHING PAD	31	BUSH
3	RUBBER DUST COVER	32	STATOR
4	ECCENTRIC DUST-PROOF COVER	33	SCREW ST4X60
5	SCREW M4X10(WITH FLAT MAT)	34	GOVERNOR
6	CONNECT SHAFT	35	SWITCH
7	BEARING 6001	36	CAPACITANCE
8	CIRCLIP $\Phi 12$	37	CORD SLEEVE
9	ECCENTRIC BLOCK	38	CABLE CLIPS
10	SCREW M4X16(WITH FLAT MAT)	39	SCREW ST4X12
11	FRONT COVER	40	CORD
12	SPINDLE	41N	GEARBOX COVER
13	BEARING 6201	42	SCREWM8X10
14	WOODRUFF KEY 3*10	43	WINDBREAK CIRCLE
15	CIRCLIP $\Phi 32$	44	HOUSING
16	BIG GEAR	45	CARBON BRUSH HOLDER
17	CIRCLIP $\Phi 10$	46	SCREW ST3X8
18	BEARING 607	47	CARBON BRUSH
19	SELF-LOCK SPRING	48	LEFT CARBON BRUSH COVER
20	SELF-LOCK PIN	49	RIGHT CARBON BRUSH COVER
21	SCREW ST4X18	50	SCREW ST4X10
22	GEAR BOX	51	HANDLE
23	NUT M6X1	53	SCREW ST4X25
24	PINION	54	SCREW ST4X12
25	BEARING629	55	SPONGE DISC
26	BEARING COVER	56	WRENCH
27	SCREW M4X10	57	WASHER
28	ARMATURE	58N	U HANDLE
29	MAGNETIC RING		

HAG918CPE-EX-RU240503 VER:2.1

инструмент, в который верим

[Ханс Кённер]

инструмент, в который верим

[Ханс Кённер]